

主要参数 Main parameter

项目 Item	XC6-4517K	单位 unit
整机重量 Gross weight	13500	kg
发动机功率 Engine power	82	kW
额定载荷 Rated load	4500	kg
最大起升高度 Maximum lifting height	16700	mm
最大前伸距 Maximum forward reach	12600	mm
最大前伸距下的有效载荷 Effective load at maximum forward reach	490	kg
载荷中心距 Center distance of load	600	mm
变幅角度 Luffing angle	-4 ~ 73	°
货叉角度 Fork angle	-90 ~ 18	°
最大牵引力 Maximum traction force	≥70	kN
爬坡能力 Gradeability	≥25	°
最大行驶速度 Maximum traveling speed	36	km/h
转弯半径 Turning radius	≤5000	mm
制动距离 Braking distance	≤10 (初速度32±2km/h)	m
整机长度 Overall length	6960	mm
整机宽度 Overall width	2500	mm
整机高度 Overall height	2850	mm
轴距 Wheelbase	3900	mm
轮距 Wheel tread	2060	mm
货叉长度 Fork length	1200	mm

随技术进步, 样本内容、产品结构、配置参数等将不断改进, 恕不另行通知。样本信息与实物存在差异的, 以实物为准。
No further information of sample contents, product structure and configuration parameters updates.
There may be some difference between sample books and material objects. Please kind prevail.

徐工铲运机械事业部
XCMG EARTH MOVING MACHINERY BUSINESS UNIT

全国统一客服热线: **400-110-9999**

地址: 江苏省徐州市金山桥经济技术开发区鲲鹏北路99号
Add: No.99 North Kungpeng Road, Xuzhou Economic Development Zone, Jiangsu, China
销售部 Sales Department: 电话 Tel/0516-87938888
售后服务部 After-sales Service: 电话 Tel/400-110-9999
备件部 Spare Parts Department: 电话 Tel/0516-83363991



微信扫一扫 立即关注

XCMG
徐工集团

徐工徐工 助您成功
XCMG FOR YOUR SUCCESS

XC6-4517K
伸缩臂叉装机 **TELESCOPIC HANDLER**



项目 Description	参数 Specification
整机工作质量 Operating weight	13500kg
额定载荷 Rated load	4500kg
最大起升高度 Maximum lifting height	16700mm
最大牵引力 Maximum traction force	≥70kN

徐工铲运机械事业部
XCMG EARTH MOVING MACHINERY BUSINESS UNIT

XC6-4517K

产品简介 Product Overview

- XC6-4517K伸缩臂叉装机是我公司K系列伸缩臂叉装机的代表作。该机采用进口康明斯发动机，动力强劲、可靠，采用进口桥箱，传动平稳，全液压湿式制动，保证行车安全，四节伸缩臂结构，最大举升高度达16.7m，操作灵活，叉运精准，自动调平，是一种多功能、高效率的小型工程机械。

XC6-4517K telescopic handler is a representative product of our K series telescopic handlers. This product is equipped with imported Cummins engine of strong and reliable power and imported axles and transmission of stable drive. The full-hydraulic wet brake is applied to ensure driving safety. The four-section telescopic boom structure features flexible operations, accurate forklifting, and automatic leveling, with the maximum lifting height up to 16.7m. It's a multifunctional high-efficiency small-sized construction machinery product.

机型特点 Characteristics

- 全景驾驶室，徐工视觉识别外观设计，时尚美观。
The panoramic cab and the XCMG's visual identity appearance design feature good fashion and elegance.
- 采用国际知名品牌发动机，动力强劲；CARRARO专用桥、箱，传动平稳可靠。
Powerful international brand engines; Special CARRARO transmissions and axles for smooth drive.
- 国际顶级全液压湿式制动系统，制动平稳、可靠，保证行车安全。
The international top-level full-hydraulic wet brake system features stable and reliable braking and guarantees driving safety.
- 四轮驱动，两轮、四轮及蟹行多种转向模式，具备超强越野能力，适应不同施工场合；
The four-wheel drive and multiple steering modes (including four-wheel, two-wheel, and crab steering modes) realize super-strong off-road capability and adapt to diversified working conditions.
- 具备车架调平功能(车身可左右摆动10°)，场地适应能力强，满足多种工况作业需求。
The frame leveling function equipped (The body is capable of 10° swing in both leftward and rightward directions) realizes powerful site adaptability and meets the needs of diversified working conditions.
- 专用超载控制系统，作业安全可靠。
The special overload control system guarantees operation safety and reliability.
- 工作系统电液比例控制，操作准确、平稳、高效。
The electrohydraulic proportional control for the working system features accurate, stable, and efficient operations.
- 先进的人机交互系统，功能齐全的仪表监测和报警系统，竭力为您提供舒适、智能、安全的操作体验。
The leading human-machine interaction system and the instrument, monitoring, and alarm system with complete functions provide you energetically with a comfortable, intelligent, and safe operation experience.
- 可配置高空作业平台、铲斗、包夹等多种机具，满足用户个性化需求。
Optional aerial working platform, bucket and various tools to meet customer needs.

行业地位 Industry position

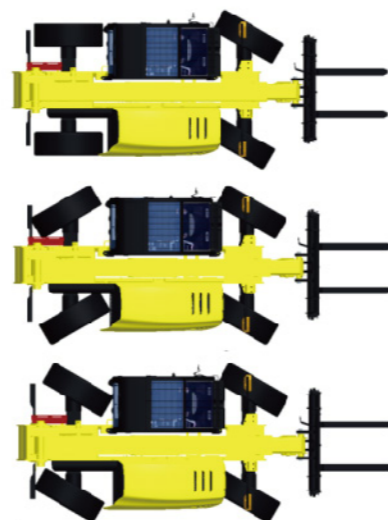
- 中国伸缩臂叉装机领跑者。
Business leader of China telescopic handlers.
- 中国伸缩臂叉装机行业标准制定者。
Business standards maker of China telescopic handlers.
- 中国工业新记录的创造者。
Record creator in China's industry.



XC6-4517K

灵活的转向控制模式 Flexible steering control modes

- 两轮转向：一般工作及高速转场作业。
Two-wheel steering mode: For common operations and high-speed site transfer.
- 四轮转向：满足狭小空间作业。
Four-wheel steering mode: For operations in narrow spaces.
- 蟹行模式：满足斜向狭长空间作业要求。
Crab steering mode: For operations in slanted narrow spaces.



环境舒适 操作简便 Comfort drive and easy operation

- 豪华型全景空调驾驶室，视野开阔，隔音、隔热、减震，造型美观，操作舒适。
Luxury and comfortable cabin with soundproof, thermal insulation, vibration reduction and open visionary.
- 操控系统、仪表开关均按照人体工程学原理布置，悬浮座椅，驾驶人员一直保持最佳舒适度，作业更轻松。
Ergonomic joysticks and dashboard layout, suspension seat for operator's easy operations.
- 配备收放机、储物格、水杯座、点烟器等，充分体现人性化设计理念。
FOPS&ROPS cabin, extinguisher and rescue hammer are equipped to ensure operator's safe operation.

超强结构 坚固可靠 Super strong structure and reliability

- 伸缩臂等关键构件经严苛耐久性试验，确保满足各类恶劣工况。
The critical structural parts, such as telescoping boom, are proved by stringent durability test to meet the needs of diversified severe working conditions.



XC6-4517叉装机通过20万次疲劳载荷及超载试验
XC6-4517 has passed fatigue load and overload tests of 200,000 times



XC6-4517K

智能科技 作业安全

Intelligent technology and high operation safety

- 专用超载控制系统,作业情况实时监控,具备声光报警及超载安全保护功能,安全可靠。

The special overload control system real-time monitors the operation situation and the sound-light alarm and overload safety protection function are provided to ensure high safety and reliability.

- 货叉调平采用流量自动补偿技术,实现动臂在变幅过程中,自动控制货叉水平,保证高位叉举的稳定和安全。

The fork leveling system adopts the automatic flow compensation technology to automatically control the levelness of forks during the luffing of the boom, in order to guarantee the forklifting stability and safety in heights.

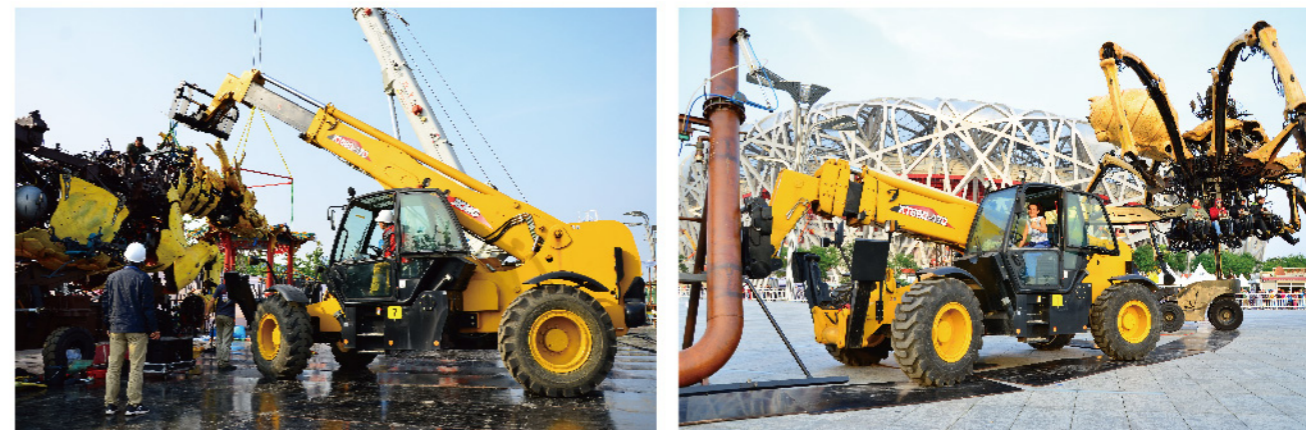
- 具备车架调平功能,场地适应能力强,确保在不同工况整车水平,作业安全。

The frame leveling function equipped maintains the levelness of the machine under diversified working conditions, featuring powerful site adaptability and high operation safety.



全面适应各种工况

Meets various working conditions



徐工伸缩臂叉装机助阵中法建交50周年庆祝活动

XCMG Telescopic Handlers Celebrate 50th Anniversary of Diplomatic Relations between China and France

维护方便

Convenient maintenances

- 侧翻式大开启机罩设计,发动机机油滤、柴油滤、空滤等可进行“一站式”维护保养;

With design of side-turning large-opening hood, "one-stop" maintenance can be fulfilled for the engine oil filter, diesel filter, and air filter.

- 并联结构集成式保险丝盒,集中控制,故障排查便利、高效。

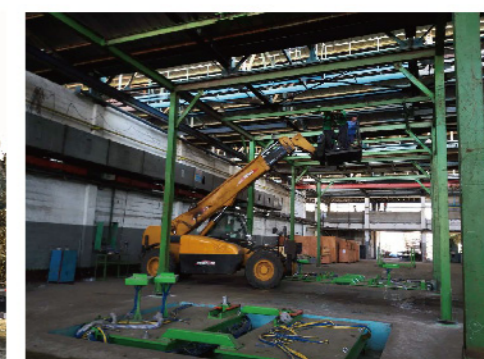
Parallel integrated fuse box of centered control for easier and effective inspections.



徐工伸缩臂叉装机海外搭建钢结构
XCMG Telescopic Handlers
Build Steel Structures
Overseas



XC6-3007K 抱夹草包装车
XC6-3007K Holding grass packing



徐工伸缩臂叉装机在埃塞俄比亚建设糖厂
XCMG Telescopic Handlers Build Sugar Refinery
in Ethiopia