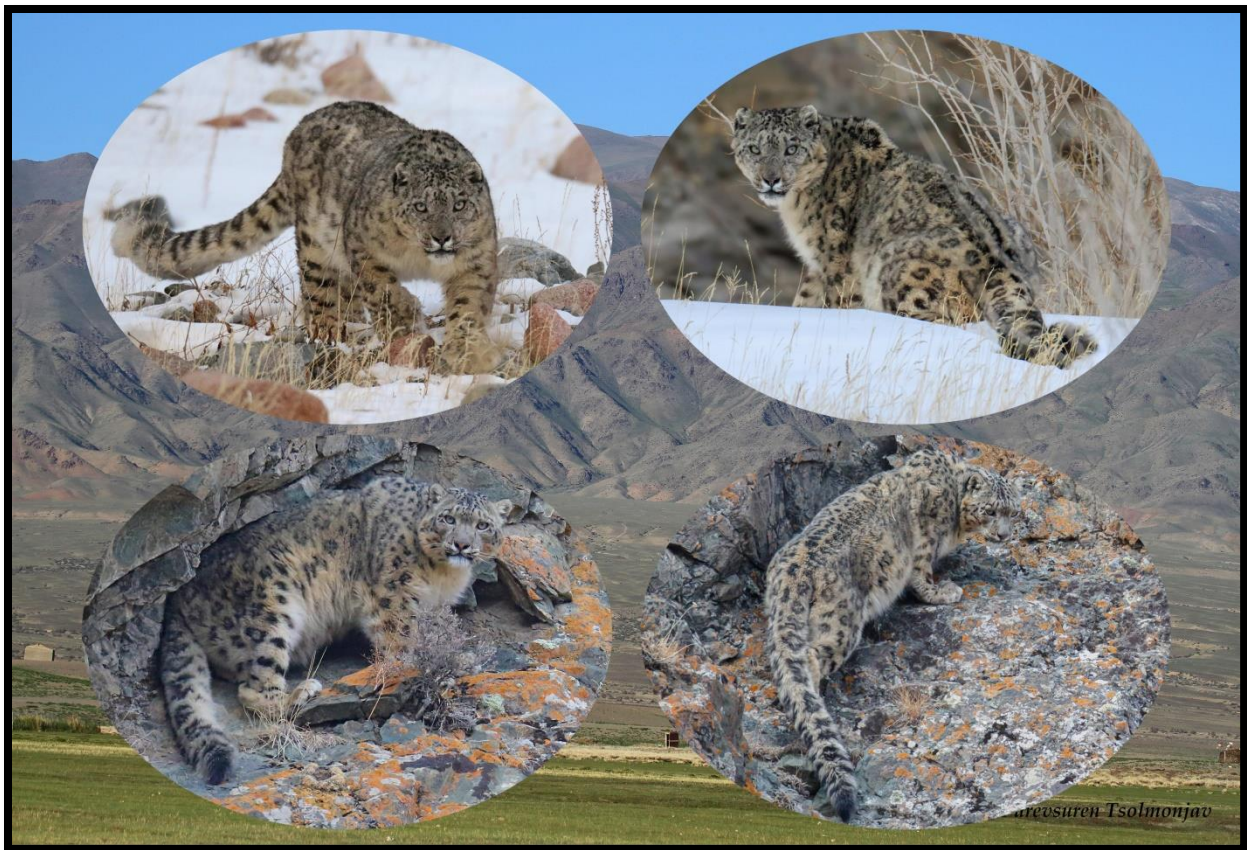




Itinerary for
SNOW LEOPARD TOUR IN WESTERN MONGOLIA



Developed by Wildlife Tours Mongolia

Background information: Mongolia is a vast country with a range of different natural habitats and ecosystems from the taiga forest to the Gobi desert. Country is mostly steppe, but boreal forests lie in the north, majestic Altai mountains stretching from west to south and grassland steppe in the east and gobi desert stretching from the south east to the south west and north west. At 1,564,600 square kilometer area, just 3.5 million people live in Mongolia. Over 40% of the entire population reside in capital city of Ulaanbaatar. Many of the Mongolians still live in a nomadic lifestyle herding their livestock throughout the year.

Mongolia is home to the second largest population of Snow Leopard in the world (953 individuals estimated in 2021). Snow Leopard tours are becoming more and more popular in Mongolia because there are better chances to see this elusive big cat at much lower altitudes like 2,000-3,000 meters. The winter months are better for the Snow Leopard trips as these large cats come down to lower areas due to scarcity of their natural prey. The Siberian Ibex (*Capra sibirica*) and Mongolian Marmot (*Marmota sibirica*) are the main prey for Snow Leopard throughout the most of its range in Mongolia. Siberian Ibex and other large wild preys are not easy to catch, and the marmots hibernate in winter. Thus, they prefer to prey on domestic animals, predominantly goats in the winter months. The Snow Leopards take livestock while grazing as well as from the herders' campsites at night. This winter diet probably increases the chances of seeing this majestic animal in their natural habitat in Mongolia.

Tour duration: 12 days

Tour Price: \$4,500 per person

This includes all expenses such as domestic flights, vehicle rent and fuel, accommodations, food, and national park fees in the country. The cost excludes international travels, excess luggage payment (domestic flights), laundry, tips and beverages.

Group size: 3-5 persons

Tour Leader: Purevsuren Tsolmonjav (Puje), one of the leading Snow Leopard guides in Mongolia. He speaks fluent English. There will be two local experienced Snow Leopard trackers.

Vehicle: Toyota Land Cruisers (4WD). We consider that the comfort of our clients is very important so that a maximum of 3 passengers will sit in each car.

Climate: Generally, It will be cold during the tours in November and mid February to early March (-20°C ~ 0°C). Snow storm can be expected at almost any time.

List of recommendd items to bring:

- Warm/winter clothes such as warm/light mountain boots, thick coat, hat, gloves, socks and winter pants that can keep you warm for a few hours staying outside,
- Headlamp,
- Trekking poles,
- Light camera gears, and
- Binoculars.
- You are also recommended to bring books to read or something to do while waiting for the trackers to call when they find the Snow Leopard.

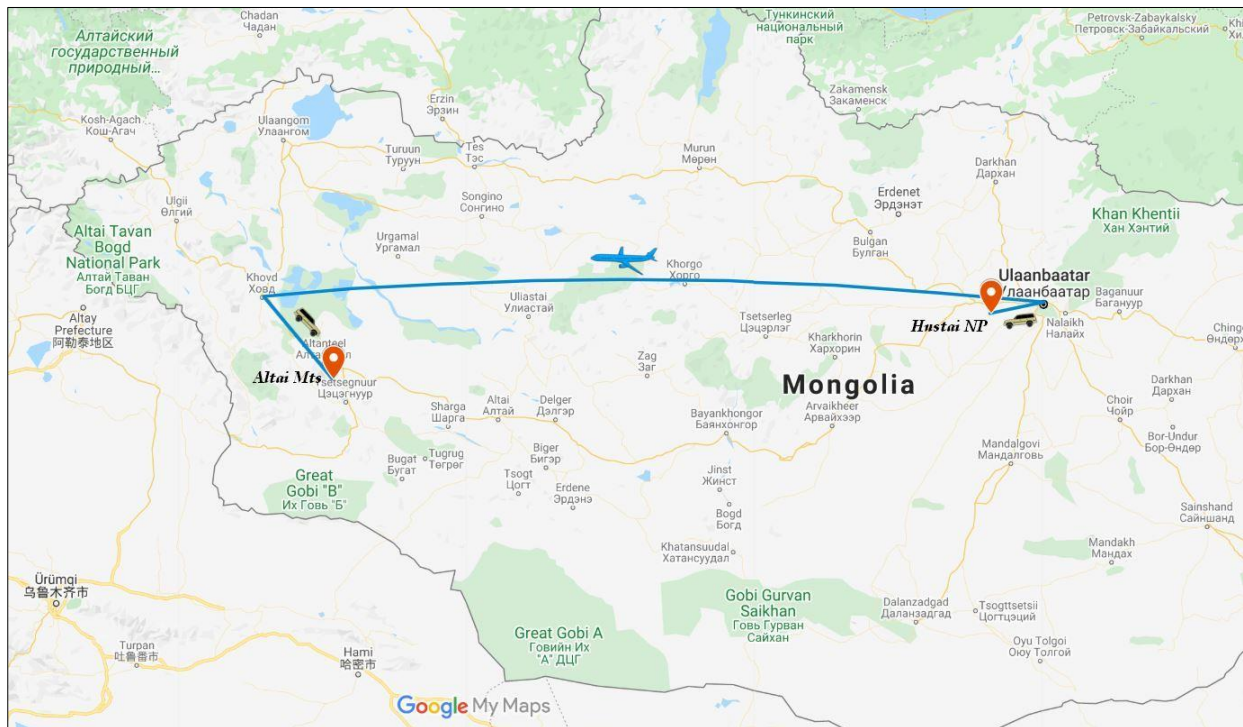
Requirements:

- Participants should be fit for hiking up and down 4-8 km on rugged terrain and able to carry own stuff.
- Be respectful to the local crew and co-clients.

Accommodation: In Ulaanbaatar, we will stay in a modern hotel. Away from there we will stay in yurt camps (called as ger in Mongolia). Our Snow Leopard camp is operated by the local communties and it has no flush toilet and shower. The yurts are heated with a coal-fired stoves, and furnished with comfortable beds with blankets and simple hand washing faucets. There is an an outhouse toilet with a proper seat with warm cover.

Mammal list for the tour:

- | | |
|----------------------|----------------------|
| 1. Snow Leopard | 7. Mongolian Gazelle |
| 2. Saiga Antelope | 8. Tolai Hare |
| 3. Przewalki's Horse | 9. Mongolian Gerbil |
| 4. Siberian Wapiti | 10. Corsac Fox |
| 5. Siberian Ibex | 11. Red Fox |
| 6. Goitered Gazelle | 12. Brandt's Vole |



Snow Leopard Tour Route

Day 1. Ulaanbaatar (UB)

We will welcome our clients, transfer to the hotel and have a short city tour.

Day 2-11. Altai Mountains in search of Snow Leopard

We will fly to western Mongolia. After landing at the local airport in Khovd town, we will transfer to our Snow Leopard base camp (~100 km) which is operated by the local communities. We will spend 7-9 days in the Altai Mountains and adjacent semi-deserts in western Mongolia in search of elusive Snow Leopard, and other wildlife and birds such as Saiga Antelope, Siberian Ibex and Bearded Vulture. Our experienced local guides/trackers will help us spot the Snow Leopard and other wildlife during our stay.

Accommodation: Snow Leopard Ger camp



Our Snow Leopard Ger camp at the base of Altai Mountains



Our Snow Leopard valley



Our Snow Leopard valley

Day 12. Hustai National Park

We will visit the Hustai National Park for a day. The park was established in 1992 to protect reintroduced wild horses also known as Przewalski's Horses or Takhi. The park also supports a large number of Siberian Wapiti. We might see some Mongolian Gazelles on the southern part of the park. The park provides important habitats for a range of bird species, especially raptors like vultures, eagles and falcons.

Accommodation: Hotel in Ulaanbaatar



Przewalski's Horses in Hustai National Park



A Wapiti Deer in Hustai National Park