

## Mi 10 5G

Дээд хурд, DSLR мэт камер технологи,  
сүпер хурдан цэнэглэлт



Android 10 (Q)  
MIUI 11.0 (MIUI 12 upgradeable)



6.67" Super AMOLED HDR 10+, 2246 X 1080 FHD+  
90Hz Smooth, 500 nits typ



Snapdragon 865 with AIE 865  
Octa-Core 2.84 Ghz Adreno 650



Li-Ion 4780mah /Fast charging 30W (Type-C)



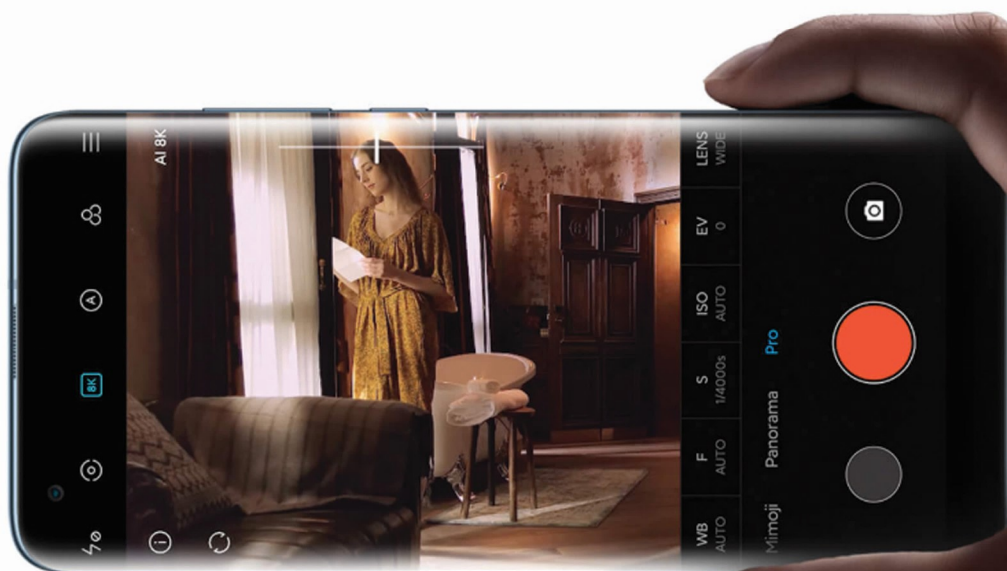
AI Quad 108+13MP+2MP+2MP  
AI 20 MP+FaceUnlock



128GB Memory, 8 GB Ram



DUAL SIM



### AE/AF Lock

Set focus and exposure separately

### Focus Peaking

Manual focus to further unleash  
your videographic creativity

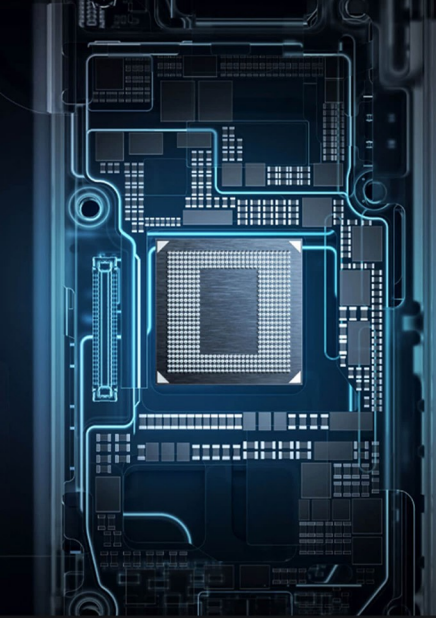
### ShootSteady video

Enjoy shudder-free videos

### AI-empowered camera movement and video editing

Professional-grade vlogging features





## LPDDR5 UFS 3.0 Flash storage

New-generation LPDDR5 RAM for 29% faster speed,  
coupled with UFS 3.0 flash storage for 100% improved performance

### 8GB LPDDR5

Largest available

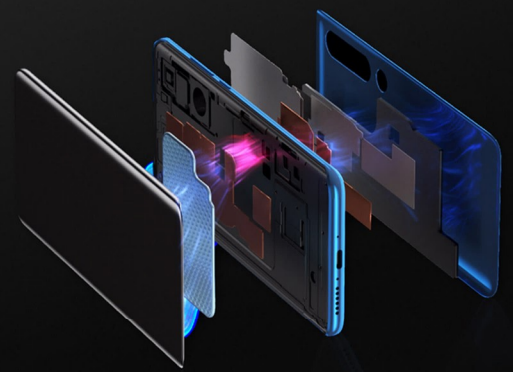
### 256GB UFS3.0

Largest available

LPDDR5 storage speed reaches 5500Mb/s  
Improved 29% than previous generation\*

LPDDR5 bandwidth reaches 44GB/s  
Improved 29% than previous generation\*

\* All data on this page are obtained from Xiaomi laboratories.  
The improvement in speed compared to the previous generation LPDDR4X, and UFS2.1.



## Wi-Fi 6

Supporting the new 802.11ax standard, Wi-Fi 6 Maximum throughput reaches 9.6Gbps, an improvement of 270% over the previous generation. Supports OFDMA and BSS Coloring technology, which allows multiple devices to connect simultaneously to maintain high and stable download speeds.

## MultiLink

2.4GHz Wi-Fi + 5GHz Wi-Fi + 60GHz  
Simultaneous connections to up to 3 networks,  
to ensure stable and uninterrupted connectivity.



### 2MP depth sensor

Assists primary sensor during portrait mode,  
1.75µm large pixel size, f/2.4 aperture

### 108MP ultra-clear primary sensor

1/1.33" large sensor size, OIS, 1.6µm 4-in-1 Super Pixels,  
f/1.7 aperture, 7P lens

### 2MP macro lens

1.75µm large pixel size, f/2.4 aperture

### 13MP ultra wide-angle lens

Up to 123° FoV, f/2.4 aperture



Before AI 2.0 Optimization



After AI 2.0 Optimization

## Movie frame

Want to add more highlights to your masterpieces? With features including 8 built-in classic movie filters, real-time background blurring, and color focus filters, your videos will be transformed into cinematic experiences.

### 2.35 : 1

The aspect ratio used in professional movie-making

### Portrait mode background blurring

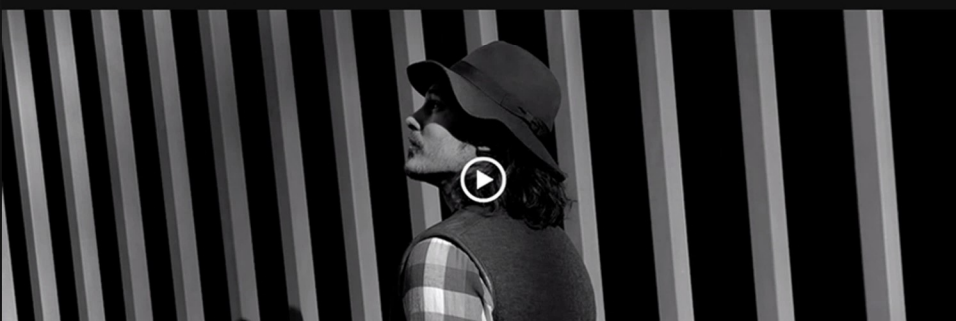
Cinematic-quality videos

### Color focus

Videos as expressive as movies

### 8 classic movie filters

Tell your stories through movie-like videos



Studio-level pictures with its portrait mode background blurring.



## Balanced stereo sound

To craft the best smartphone audio speakers, the Mi 10 series delivers two breakthroughs: a truly balanced stereo design, and a 7 magnet speaker design. This doubles the volume and greatly increases the dynamic range. This industry-leading hardware is combined with fine-tuned exclusive stereo sound effects for different scenarios, bringing you a more immersive audio experience.

