



# Powermax Fasteners

hex nut, square nut, high strength nut, special nut  
and bolt by different standard.





Hex Nut, Square Nut, High strength Nut, Special Nut and Bolt by different standard.



it's a member of Chinese Fastener Association. The company mainly manufacture Hex Nut, Square Nut, High strength Nut, Special Nut and Bolt by different standard.

The company have full set machines & Quality Testing Machines, Products have been passed ISO:9001~2000 Quality System Certificate. we had gathered plenty experience & Technology from so many years produce practice, and we still keep big investing on machines, progress, making technics progress. Now we had full complete produce technics line & quality test machines. "Quality win market, credibility win client" it our aim forever. Warmly welcome any clients both at home and abroad.

The company have about 120 workers, the produce ability it's 1100 Ton per month. The produce standard include: GB, ANSI, DIN, BS, JIS, AS, ISO and also Russian standard. The grade include: Grade 6; 8; 10; 7; 4; 7M. The Nut's Diameter about M10~M100(3/8"~4"), and the Bolt's & stud bolt length can reach 25~1200mm or 100~3660mm. Now our products are widely distributed Southeast Asia, Europe, Middle East and so on.



公司现拥有员工 120 多名，生产能力每月达 1100 吨。生产标准有中国标准 (GB)、美国标准 (ANSI)、德国标准 (DIN)、英国标准 (BS)、日本标准 (JIS)、澳大利亚标准 (AS)、国际标准 (ISO)，俄罗斯标准等。等级包括：6；8；10；7；4；7M。生产范围：直径 M10—M100(3/8"—4")；螺栓长度 25—1200mm；牙条长度 100—3660mm。现在我司产品已远销东南亚，欧洲，中东等地。

公司生产设备齐全，检测设备完善，产品质量已通过 ISO9001~2000 质量管理认证体系。擎力五金在多年创业实践中积累了丰富的生产经验和技术水平，并加大投资力度，不断完善生产设施，改进生产工艺，现已具备一整套的生产工艺流程线和测试设备。“质量赢得市场，诚信赢得客户”是公司永恒的宗旨。热忱欢迎国内外客户来电来函垂询。





The company have about 120workers, the produce ability it's 1100Ton per month. The produce standard include: GB, ANSI, DIN, BS, JIS, AS ,ISO and also Russian standard. The grade include: Grade 6; 8; 10 ; 7; 4 ; 7M 。 The Nut's Diameter about M10~M100(3/8"~4"),and the Bolt's&stud bolt length can reach 25—1200mm or 100—3660mm. Now our products are widely distributed Southeast Asia, Europe, Middle East and so on.

Qauality win market, credibility win clinet





六角头螺栓

HEXAGON HEAD BOLTS/HEAVY HEX BOLTS/STRUCTUAL BOLTS

- **Standard Spec:** DIN933,DIN931,DIN6914; A325/A490-Type 1, A-10; BS3692
- **Diameter:** M4~M72 (8# ~ 4")
- **Length:** 6-1000mm
- **Material:** Carbon Steel, Alloy Steel, Stainless Steel Steel
- **Class:** 4.8,5.8,6.8,8.8,10.9,G-2,G5



德制 / 美制六角螺栓 (普通型)

DIN/ASME HEX BOLT (NORMAL)

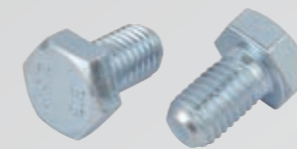
- ANSI Grade2/Grade 5/Grade 8
- ASTM A307 Grade A
- DIN931/ DIN933 /DIN960 /DIN961
- Class:4.6/ 4.8 /6.8 /8.8 /10.9 /12.9



钢结构螺栓 (发黑)

STEEL STRUCTURAL BOLTS (BLACK)

- ASTM A325 Type 1
- ASTM A490 Type 1
- DIN6914 Class HV-10.9



钢结构螺栓 (蓝白锌)

STEEL STRUCTURAL BOLTS (Z/P)

- ASTM A325 Type 1
- ASTM A490 Type 1
- DIN6914 Class HV-10.9



钢结构螺栓 (热镀锌)

STEEL STRUCTURAL BOLTS (HDG)

- ASTM A325 Type 1
- ASTM A490 Type 1
- DIN6914 Class HV-10.9



美制大六角结构螺栓

HEAVY HEX STRUCTURAL BOLTS

- ANSI/ASME / B18.2.1 / IFI E34
- A325 /A490 Type 1
- ASTM A193 Grade B7/B7M
- ASTM A320 Grade L7/L7M
- ASTM A307 Grade B





## SPECIAL BOLTS

we can produce according drawing design or sample request

各类非标螺栓

## Special bolts

We can produce according drawing design or sample request



重型六角螺栓 (特氟龙)

HEAVY HEX BOLTS (PTFE)

- A325 /A490 Type 1
- ASTM A193 Grade B7/B7M
- ASTM A320 Grade L7/L7M
- ASTM A307 Grade B



重型六角系列

HIGH STRENGTH BOLT/NUTS/WASHERS FOR STRUCTURES STEEL JOINTS

- GB/T1228-1231
- DIN6914-6916
- ASME B18.2.6(A325,A490)
- JISB1186 AS1252

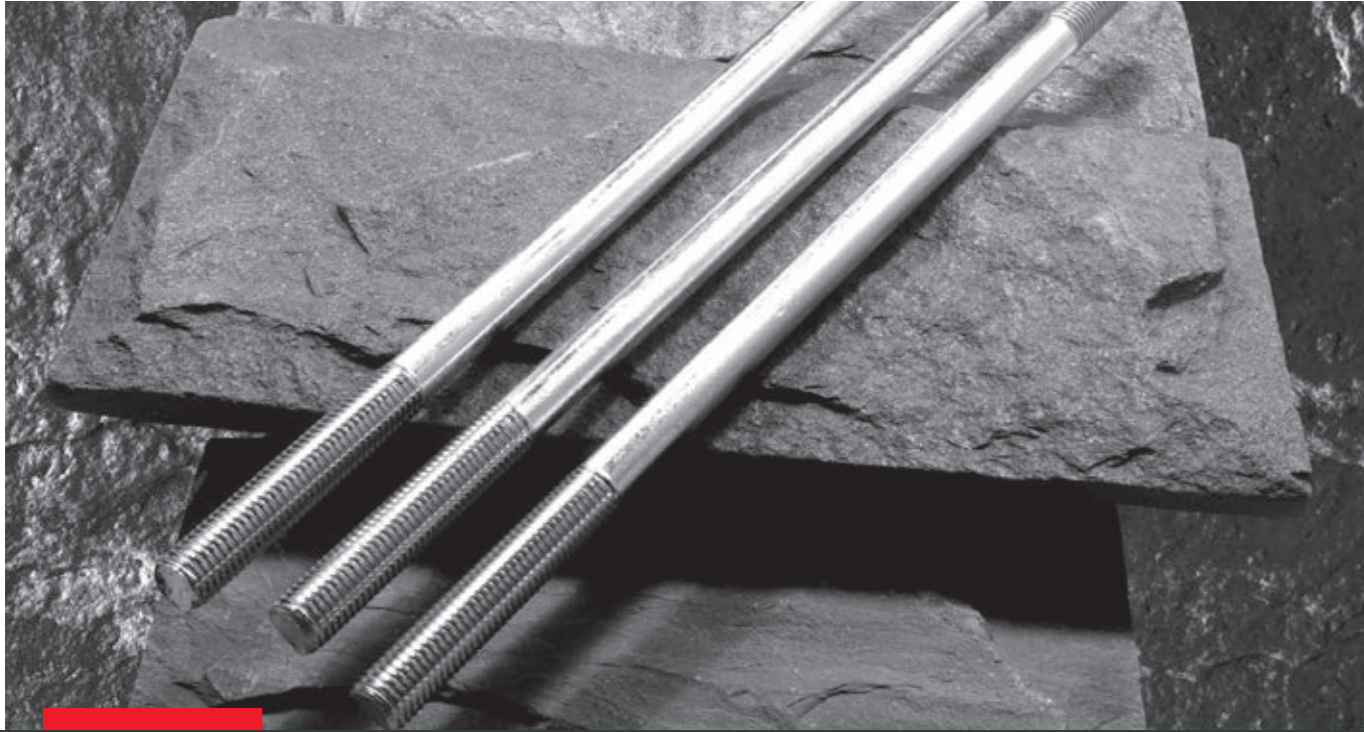


内六角螺栓

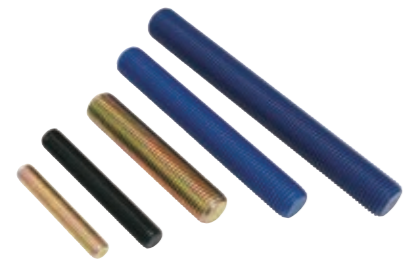
HEXAGON SOCKET HEAD SCREWS

- GB/T70
- ISO4762
- DIN6912/ DIN912
- Grade:8.8 /10.9 /12.9





## Thread rods/stud bolts/ double end stud 牙条系列



我们提供全方位的柱螺栓，广泛用于各种电气、化学和工程部门。这些基于“增大化现实”技术可以在不同的形状和大小和估计的各种特性，如耐腐蚀、尺寸精度和较长的使用寿命。

We offer a comprehensive range of Stud Bolts, which is used extensively in various electrical, chemical and engineering sectors. These are available in different shapes & sizes and are reckoned for their various features such as corrosion resistance, dimensional accuracy and longer service life.

## Thread rods/stud bolts/double end stud



全牙螺柱 (碳钢、合金钢) (镀锌)

FULL THREAD STUD (Z/P)

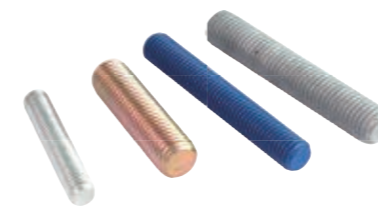
- ASTM A193 Grade B7/B7M
- ASTM A320 Grade L7/L7M
- SAE J429 Grade 2/ 5/ 8
- DIN975/DIN976 Grade 4.8/ 8.8 /10.9
- ASTM A193 Grade B16



全牙螺柱 (碳钢、合金钢) (发黑)

FULL THREAD STUD (BLACK)

- ASTM A193 Grade B7/B7M
- ASTM A320 Grade L7/L7M
- SAE J429 Grade 2/ 5/ 8
- DIN975/DIN976 Grade 4.8/ 8.8 /10.9
- ASTM A193 Grade B16



全牙螺柱 (碳钢、合金钢) (热镀锌, 特氟龙)

FULL THREAD STUD (HDG, PTFE)

- ASTM A193 Grade B7/B7M
- ASTM A320 Grade L7/L7M
- SAE J429 Grade 2/ 5/ 8
- DIN975/DIN976 Grade 4.8/ 8.8 /10.9
- ASTM A193 Grade B16





全牙螺柱 ( 不锈钢 )

FULL THREAD STUD (S/S)

- ASTM A193 Grade B8/B8M
- ASTM A453 Grade 660
- ISO 3506 A2-70



全牙螺柱配螺母 ( 碳钢、合金钢 )( 发黑, 特氟龙 )

FULL THREAD STUD WITH NUTS ( BLACK , PTFE)

- ASTM A193 Grade B7/B7M
- DIN975/DIN976 Grade 4.8/ 8.8 /10.9
- ASTM A320 Grade L7/L7M
- ASTM A193 Grade B16
- SAE J429 Grade 2/ 5/ 8



全牙螺柱 ( 不锈钢 )

FULL THREAD STUD WITH NUTS (S/S)

- ASTM A193 Grade B8/B8M
- ASTM A453 Grade 660
- ASTM A194 Grade 8/8M
- ISO 3506 A2-70



双头螺柱 ( ( 碳钢、合金钢 )( 发黑, 镀锌 )

DOUBLE END THREAD STUD (BLACK, Z/P)

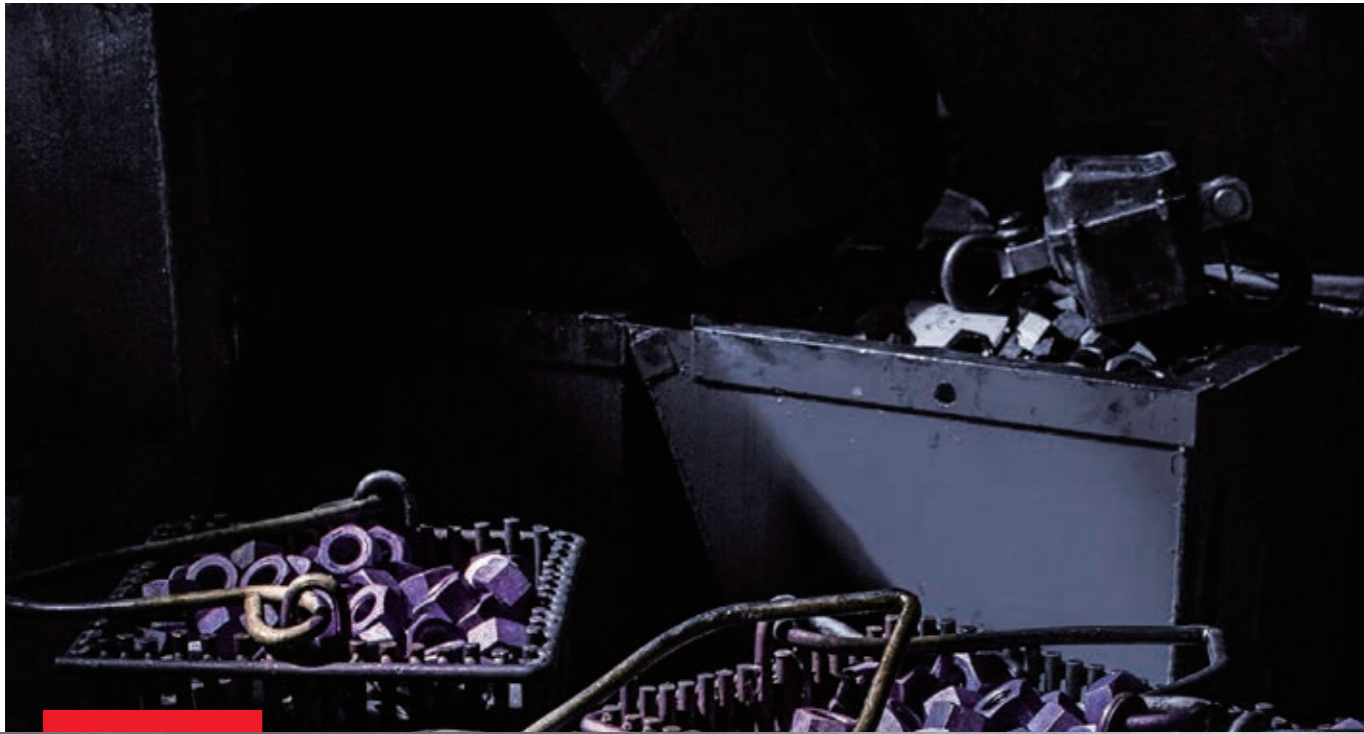
- ASTM A193 Grade B7/B7M
- DIN975/DIN976 Grade 4.8/ 8.8 /10.9
- ASTM A320 Grade L7/L7M
- ASTM A193 Grade B16
- SAE J429 Grade 2/ 5/ 8



方头全螺纹螺柱

SQUARE HEAD FULL THREAD STUD



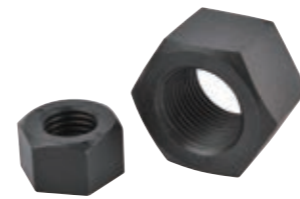


## HEX NUTS SERIES

螺母系列



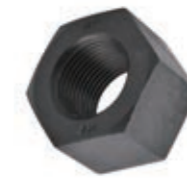
Thread rods/stud bolts/double end stud



美制重型六角螺母 (发黑)

HEAVY HEX NUTS( BLACK)

- ASTM A194 Grade 4
- ASTM A194 Grade 7 / 7M
- DIN934 H=D Grade 2H/2HM
- DIN934 H=D Grade 7 / 7M



美制重型六角螺母 (发黑)

HEAVY HEX NUTS( BLACK)

- ASTM A194 Grade 7 / 7M
- DIN934 H=D Grade 7 / 7M
- ASTM A194 Grade 2H/ 2HM
- DIN934 H=D Grade 2H/2HM



美制重型六角螺母 (不锈钢)

HEAVY HEX NUTS( S / S )

- ASTM A194 Grade 8/ 8M
- DIN934 H=D Grade 8/ 8M
- ASTM A453 Grade 660



美制重型六角螺母 (特氟龙)

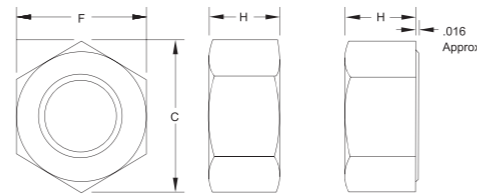
HEAVY HEX NUTS( PTFE)

- ASTM A194 Grade 7 / 7M
- DIN934 H=D Grade 7 / 7M
- ASTM A194 Grade 2H/ 2HM
- DIN934 H=D Grade 2H/2HM



美制重型六角螺母

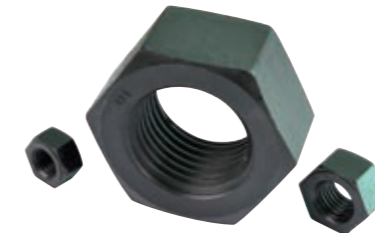
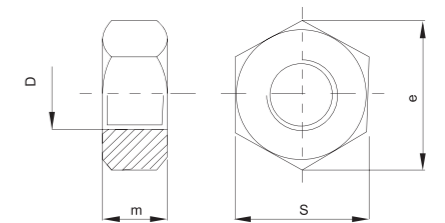
HEAVY HEX NUTS  
A194 2H/2HM, A563 DH



| Nominal Size | F                  |       |       | C                    |       | H         |       |       | Weight per nut |
|--------------|--------------------|-------|-------|----------------------|-------|-----------|-------|-------|----------------|
|              | Width across flats |       |       | Width across corners |       | Thickness |       |       |                |
|              | Basic              | Max   | Min   | Max                  | Min   | Basic     | Max   | Min   |                |
| 3/8          | 11/16              | 0.688 | 0.669 | 0.794                | 0.763 | 23/64     | 0.377 | 0.341 | 0.03           |
| 1/2          | 7/8                | 0.875 | 0.850 | 1.010                | 0.969 | 31/64     | 0.504 | 0.464 | 0.07           |
| 5/8          | 1-1/16             | 1.062 | 1.031 | 1.227                | 1.175 | 39/64     | 0.631 | 0.587 | 0.12           |
| 3/4          | 1-1/4              | 1.250 | 1.212 | 1.443                | 1.382 | 47/64     | 0.758 | 0.710 | 0.20           |
| 7/8          | 1-7/16             | 1.438 | 1.394 | 1.660                | 1.589 | 55/64     | 0.885 | 0.833 | 0.30           |
| 1            | 1-5/8              | 1.625 | 1.575 | 1.876                | 1.796 | 63/64     | 1.012 | 0.956 | 0.43           |
| 1-1/8        | 1-13/16            | 1.812 | 1.756 | 2.093                | 2.002 | 1-7/64    | 1.139 | 1.079 | 0.59           |
| 1-1/4        | 2                  | 2.000 | 1.938 | 2.309                | 2.209 | 1-7/32    | 1.251 | 1.187 | 0.79           |
| 1-3/8        | 2-3/16             | 2.188 | 2.119 | 2.526                | 2.416 | 1-11/32   | 1.378 | 1.310 | 1.02           |
| 1-1/2        | 2-3/8              | 2.375 | 2.300 | 2.742                | 2.622 | 1-15/32   | 1.505 | 1.433 | 1.31           |
| 1-5/8        | 2-9/16             | 2.562 | 2.481 | 2.959                | 2.828 | 1-19/32   | 1.632 | 1.556 | 1.62           |
| 1-3/4        | 2-3/4              | 2.750 | 2.662 | 3.175                | 3.035 | 1-23/32   | 1.759 | 1.679 | 2.04           |
| 1-7/8        | 2-15/16            | 2.938 | 2.844 | 3.392                | 3.242 | 1-27/32   | 1.886 | 1.802 | 2.41           |
| 2            | 3-1/8              | 3.125 | 3.025 | 3.608                | 3.449 | 1-31/32   | 2.013 | 1.925 | 2.99           |
| 2-1/4        | 3-1/2              | 3.500 | 3.388 | 4.041                | 3.862 | 2-13/64   | 2.251 | 2.155 | 4.19           |
| 2-1/2        | 3-7/8              | 3.875 | 3.750 | 4.474                | 4.275 | 2-29/64   | 2.505 | 2.401 | 5.64           |
| 2-3/4        | 4-1/4              | 4.250 | 4.112 | 4.907                | 4.688 | 2-45/64   | 2.759 | 2.647 | 7.38           |
| 3            | 4-5/8              | 4.625 | 4.475 | 5.340                | 5.102 | 2-61/64   | 3.013 | 2.893 | 9.50           |
| 3-1/4        | 5                  | 5.000 | 4.838 | 5.774                | 5.515 | 3-3/16    | 3.252 | 3.124 | 11.94          |
| 3-1/2        | 5-3/8              | 5.375 | 5.200 | 6.207                | 5.928 | 3-7/16    | 3.506 | 3.370 | 15.26          |
| 3-3/4        | 5-3/4              | 5.750 | 5.562 | 6.640                | 6.341 | 3-11/16   | 3.760 | 3.616 | 18.12          |
| 4            | 6-1/8              | 6.125 | 5.925 | 7.073                | 6.755 | 3-15/16   | 4.014 | 3.862 | 21.80          |

德标 / 美制六角螺母

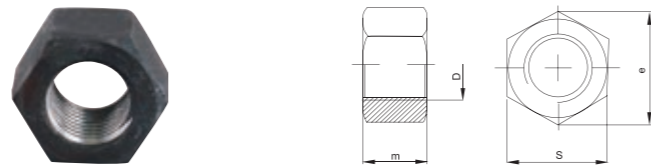
HEXAGON NUTS  
Standard: DIN934 / 555, D-6, DIN6915



| Dimension | S        | e        | m   | kgs/M.pcs |
|-----------|----------|----------|-----|-----------|
| Size      | max.(mm) | min.(mm) | max |           |
| M4        | 7        | 7.66     | 3.2 | 0.81      |
| M5        | 8        | 8.79     | 4   | 1.23      |
| M6        | 10       | 11.05    | 5   | 2.50      |
| M8        | 13       | 14.38    | 6.5 | 5.20      |
| M10       | 17       | 18.9     | 8   | 11.60     |
| M12       | 19       | 21.1     | 10  | 17.30     |
| M14       | 22       | 24.49    | 11  | 25.00     |
| M16       | 24       | 26.75    | 13  | 33.30     |
| M18       | 27       | 29.56    | 15  | 49.40     |
| M20       | 30       | 32.95    | 16  | 64.40     |
| M22       | 32       | 35.03    | 18  | 79.00     |
| M24       | 36       | 39.55    | 19  | 110.00    |
| M27       | 41       | 45.2     | 22  | 165.00    |
| M30       | 46       | 50.85    | 24  | 223.00    |
| M33       | 50       | 55.37    | 26  | 288.00    |
| M36       | 55       | 60.79    | 29  | 393.00    |
| M39       | 60       | 66.44    | 31  | 502.00    |
| M42       | 65       | 71.3     | 34  | 652.00    |
| M45       | 70       | 76.95    | 36  | 800.00    |
| M48       | 75       | 82.6     | 38  | 977.00    |

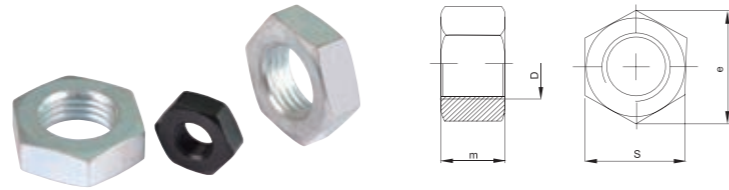


意标螺母  
UNI5587 NUTS



| Thread Size | M3   | M4   | M5   | M6    | M8    | M10   | M12   | M16   | M20   | M24   | M30   |
|-------------|------|------|------|-------|-------|-------|-------|-------|-------|-------|-------|
| m           | 3    | 4    | 5    | 6     | 8     | 10    | 12    | 16    | 20    | 24    | 30    |
| e           | 6.08 | 7.74 | 8.87 | 11.05 | 14.38 | 18.90 | 21.10 | 26.75 | 33.53 | 39.98 | 51.29 |
| s           | 5.5  | 7    | 8    | 10    | 13    | 17    | 19    | 24    | 30    | 36    | 46    |

德标 / 美标六角薄螺母  
CHAMFERED HEXAGON THIN NUTS  
• DIN439/DIN936



| Thread Size | M3   | M4   | M5   | M6    | M8    | M10  | M12  |
|-------------|------|------|------|-------|-------|------|------|
| Pitch       | 0.5  | 0.7  | 0.8  | 1     | 1.25  | 1.5  | 1.75 |
| m           | 1.8  | 2.2  | 2.7  | 3.2   | 4     | 5    | 6    |
| e           | 6.01 | 7.66 | 8.79 | 11.05 | 14.38 | 18.9 | 21.1 |
| s           | 5.5  | 7    | 8    | 10    | 13    | 17   | 19   |

| Thread Size | M16   | M20   | M24   | M30   | M36   | M42  | M48  |
|-------------|-------|-------|-------|-------|-------|------|------|
| Pitch       | 2     | 2.5   | 3     | 3.5   | 4     | 4.5  | 5    |
| m           | 8     | 10    | 12    | 15    | 18    | 21   | 24   |
| e           | 26.75 | 32.95 | 39.55 | 50.85 | 60.79 | 71.3 | 82.6 |
| s           | 24    | 30    | 36    | 46    | 55    | 65   | 75   |



尼龙锁紧螺母  
NYLON INSERT LOCK NUTS  
• DIN985 DIN982

六角法兰面螺母  
HEX FLANGE NUTS  
• DIN6923  
• ANSI/ASME B18.2.2/ IFI D-21



澳标六角螺母 ( 镀蜡 / 紫色 )  
• AS1252



六角螺母 ( 标准牙 / 细牙 )  
• GB6170/ 6171 / 6173 / 1229



各类非标螺母 ( 可以来图定做 )  
Special Nut (we can produce according drawing design or sample request)