

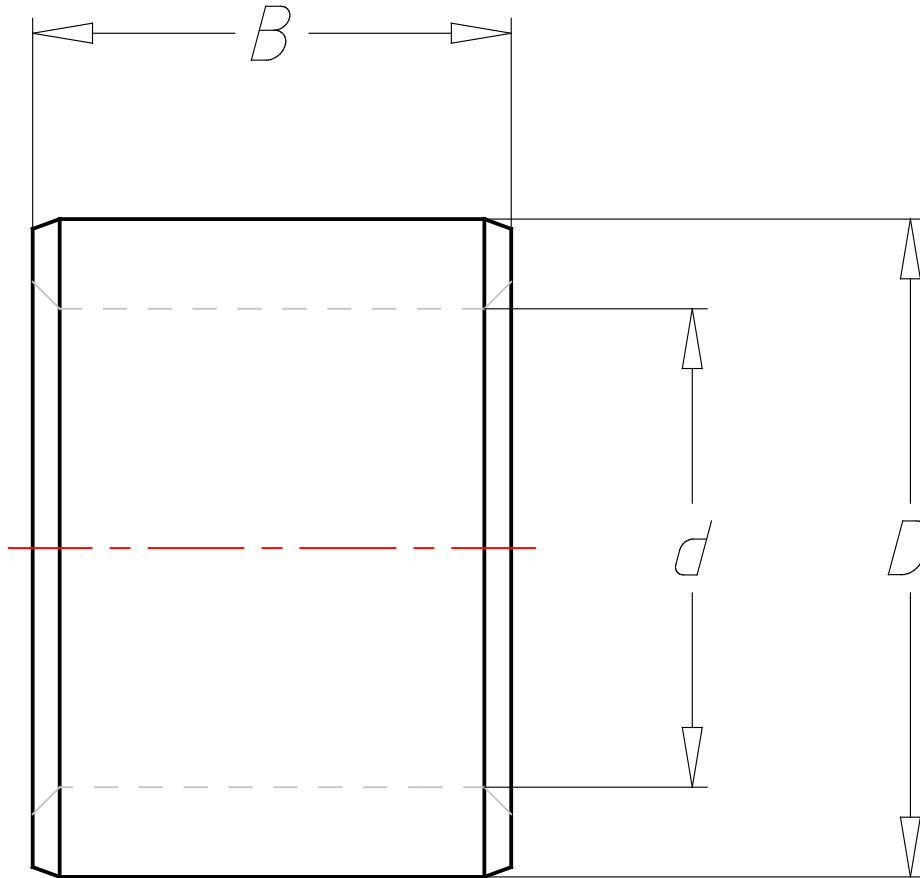
PCM 252840 E

Bushings

3D View

Interactive 3D graphic, click to activate and rotate

Technical drawings



Technical Data

Designation	PCM 252840 E
	Straight
d - Bore diameter	25 (mm)
D - Outside diameter	28 (mm)
B - Width	40 (mm)
D1 - Outside diameter flange	(mm)
C - Basic dynamic load rating - radial direction	78 (kN)
C0 - Basic static load rating - radial direction	245 (kN)
Ca - Basic dynamic load rating - axial direction	(kN)
C0a - Basic static load rating - axial direction	(kN)
	Straight